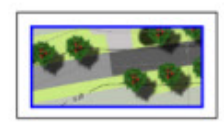


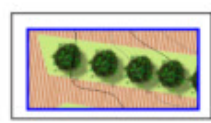
LANDSCAPE FRAMEWORK



LEGEND



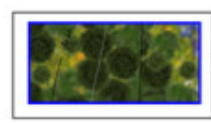
ROAD INFRASTRUCTURE WITH AVENUE / STREET TREE PLANTING ALONG PRIMARY ROAD SPINE



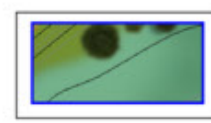
OPPORTUNITY TO CREATE A NEW 'VILLAGE' CENTRE WITH A TIGHT URBAN GRAIN



INTERLINKED RIBBONS OF GREEN SPACE: STRUCTURE AND TREE PLANTING IN LARGE SWATHES OF ENRICHED GRASS MEADOWS AND AMENITY GRASSLAND



NATIVE SPECIES BASED LOW WOODLAND / WOODLAND EDGE PLANTING



WET WILDFLOWER MEADOWS, WETLAND PERENNIALS AND TREE PLANTING ACROSS SUDS ATTENUATION / DETENTION BASINS TO ENHANCE BIODIVERSITY AND EXTEND HABITATS



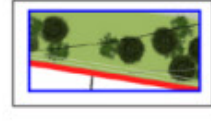
DISTINCT PODS OF HOUSING PRESENTING OUTWARD LOOKING DEVELOPMENT ALONG THE UNION CANAL FRONTAGE, EDINBURGH ROAD AND ONTO GREEN SPACE



OPPORTUNITY TO CREATE A NEW CENTRAL VILLAGE 'PARK' INCLUDING A 'VILLAGE' GREEN AND FORMAL / INFORMAL RECREATION



SEMI-NATURAL PARKLAND BETWEEN PROPOSED DEVELOPMENT AND THE UNION CANAL INCLUDING LARGE AREAS OF WILDFLOWER AND ENRICHED GRASS MEADOWS AND SMALL GROUPS OF NATIVE SPECIES STRUCTURE AND TREE PLANTING



GREEN BUFFERS TO PROTECT VISUAL AMENITY INCORPORATING LOW WOODLAND EDGE, HEDGEROWS AND TREE PLANTING IN SWATHES OF ENRICHED GRASS MEADOWS



NEW SITE-WIDE PEDESTRIAN NETWORK WITH DIRECT LINKS TO EDINBURGH ROAD AND THE POTENTIAL FOR A BRIDGE LINK OVER THE UNION CANAL TO CREATE A NEW SAFE ROUTE TO THE SCHOOL

SCALE BAR 0 10 20 50 75 100



PART OF HENRY BOOT

WILCOXHOLM FARM / RESIDENTIAL DEVELOPMENT

